

SUSTAINABLE LEATHER®

DANI



Seta

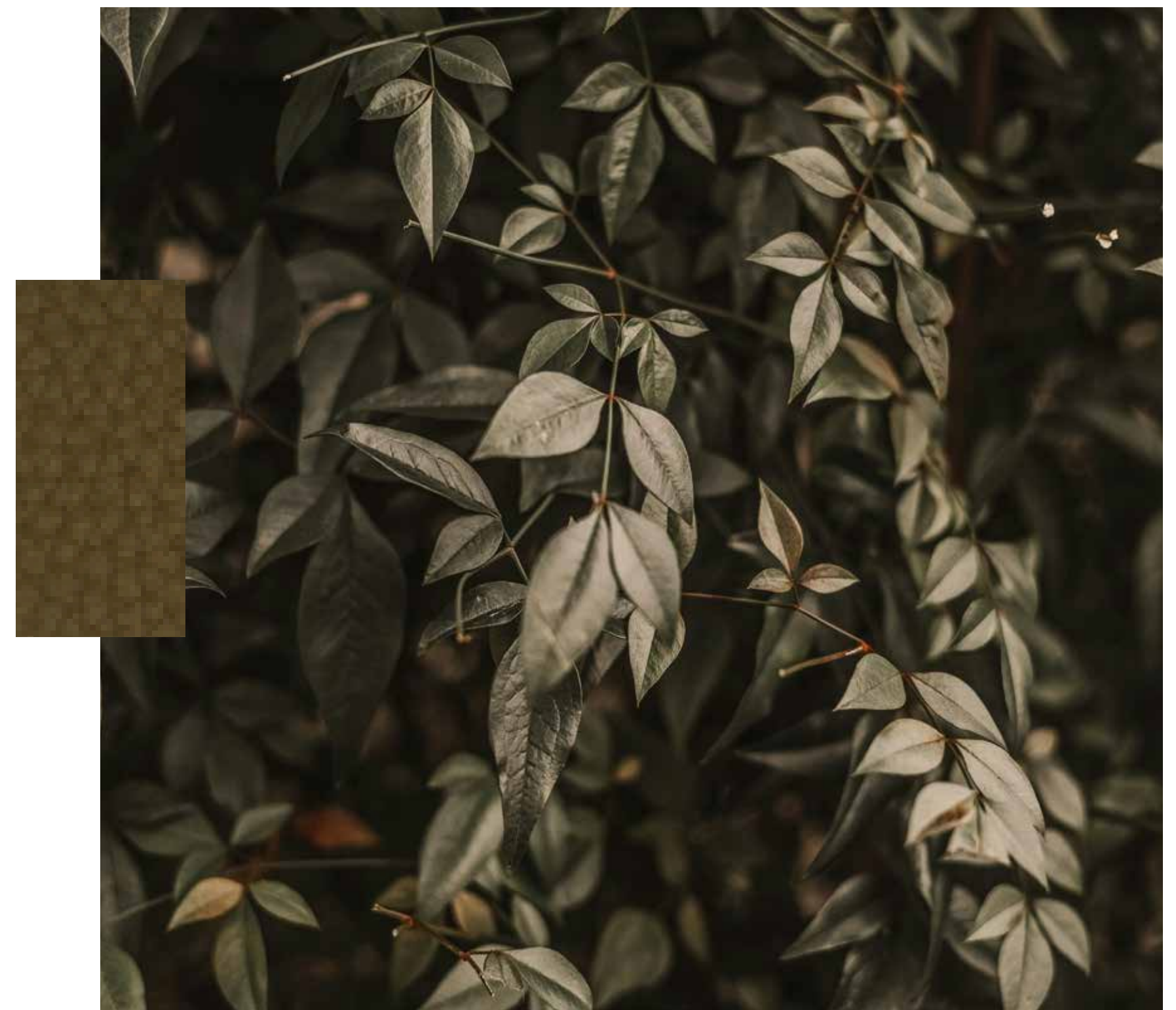
collection



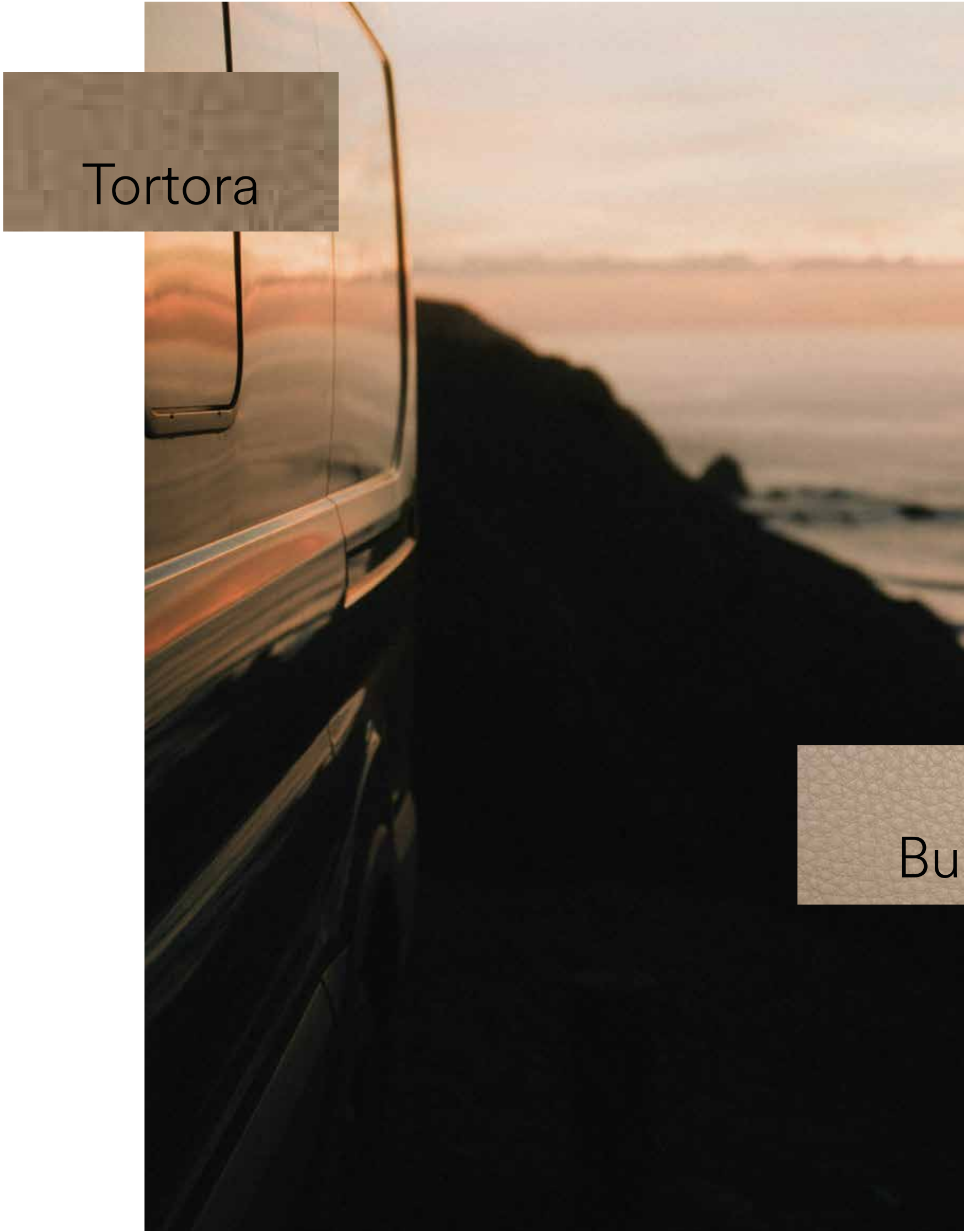
Latte

Grigio

Militare



The association with silk is due to the characteristics sought and developed in this leather article: smoothness, softness, elegance, elasticity, and resistance to tearing. Of all of them, the lustre stands out, a much-loved quality of this noble and precious natural fibre that DANI has interpreted and translated with a scribe that creates *chiaroscuro* effects capable of highlighting shapes and relief through variations in light and shade. Seta becomes the interpreter of an exclusive story that has become part of our country's culture and history but readapted in a contemporary key.

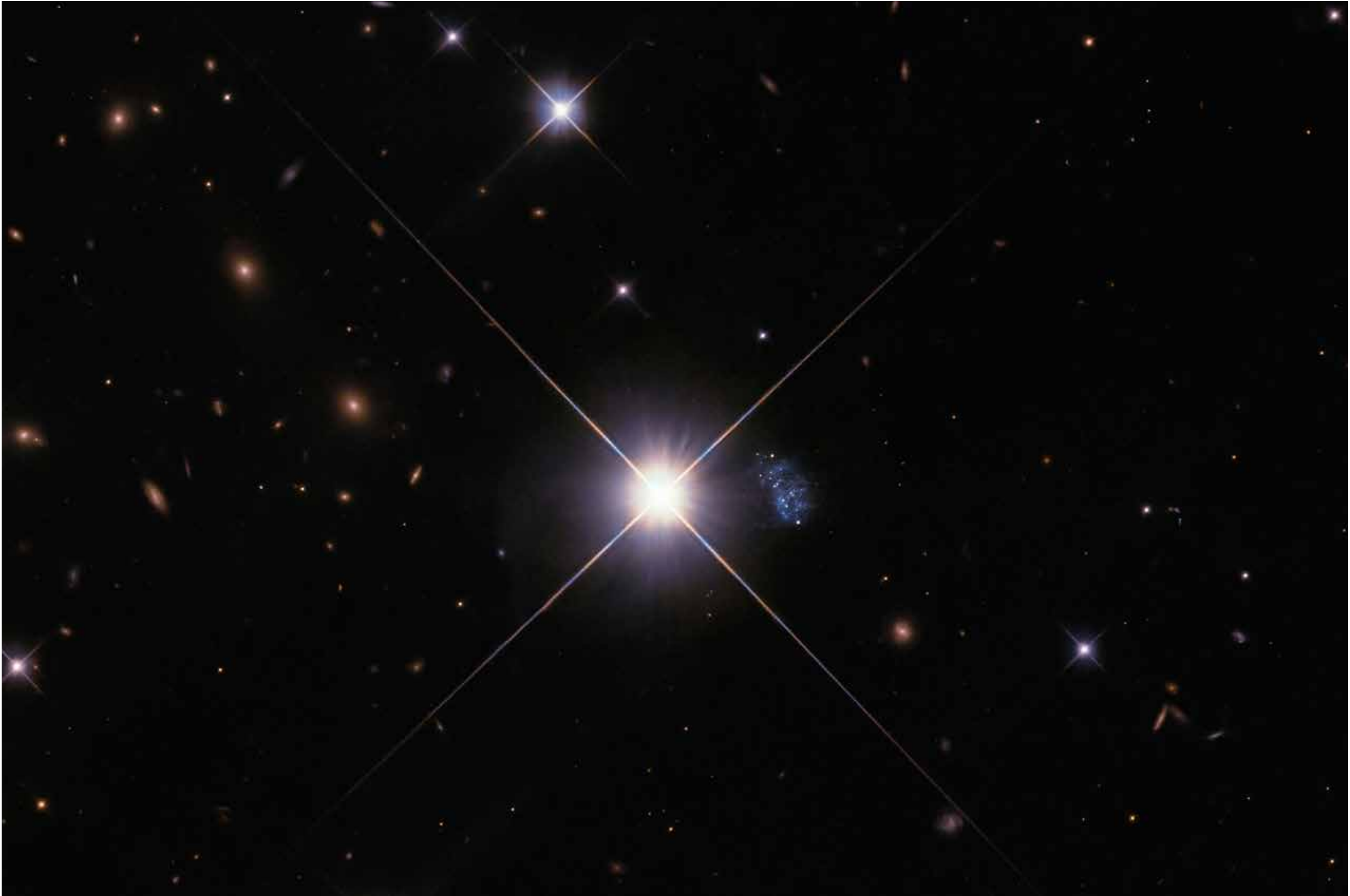


Tortora

Burro

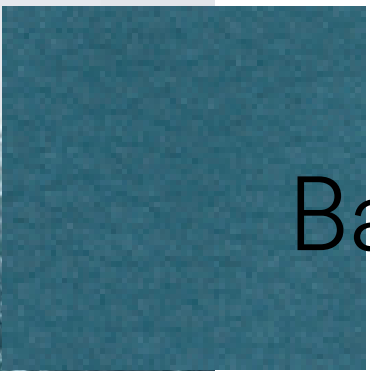


Nero

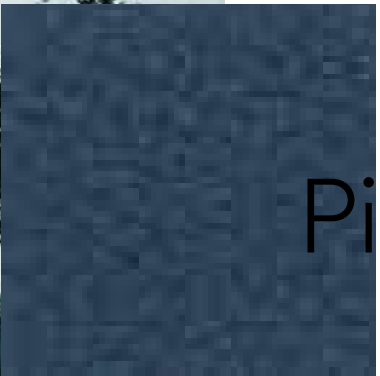




Rubino



Baltico



Pilote

Available colors range



Latte



Burro



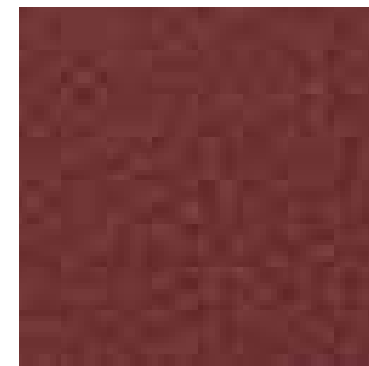
Biscotto



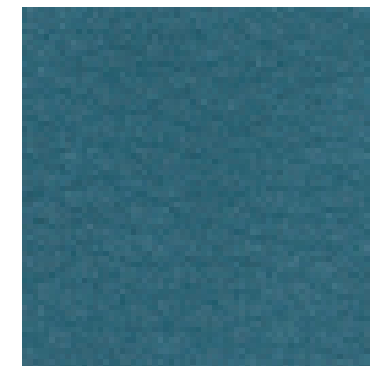
Caramello



Brandy



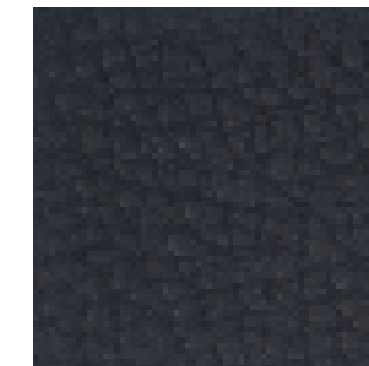
Rubino



Baltico



Pilote



Midnight



Militare



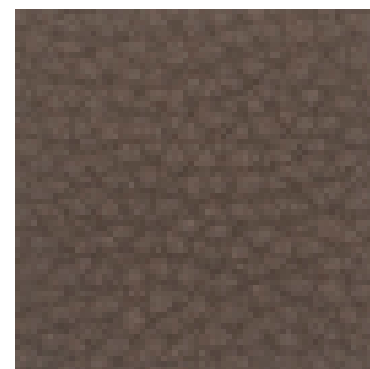
Creta



Tortora



Grigio



Talpa



Ebano



Piombo



Nero

Seta

Application: Leather goods, furniture & contract, smart devices, footwear

Thickness: 1.3 - 1.5 mm

Leather size: Full

Colors : 17 colors available

Typology: Aniline, full grain, through dyeing aniline

Tanning: Chromium salts

Features: Emotional leather

