



OCEAN



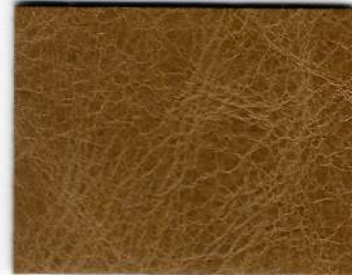
TORTORA



CORDA



COGNAC



CARAMELLO



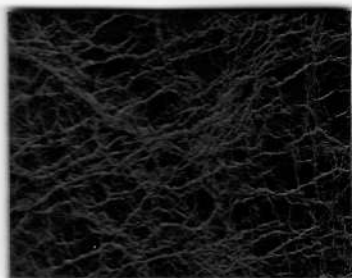
ROSSO



CHIANTI



DARK BROWN



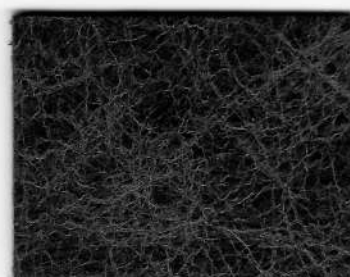
TESTA



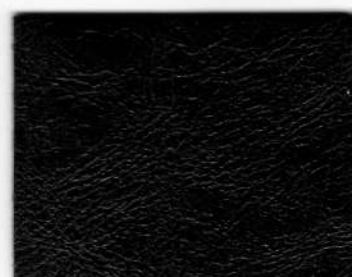
GREEN



OCEAN



ANTRACITE



NERO

# ROTARY

Tipo de cuero | Type of leather

**Piel Bovina** | Bovine

Origen | Origin

**Europeo** | European

Curtición | Tanning

**Cromo** | Chrome

Grosor | Thickness

**0,9 / 1,1 mm**

Acabado | Finishing

**Con anilinas y encerado** | With aniline and waxes

Tintura | Dyeing

**Atravesado** | Through

Superficie | Surface

**Esmerilada** | Lightly buffed

Tamaño promedio | Average size

**4,8mq**

## Solidez del color | Colour fastness

Ante luz artificial | To artificial light

≥2/3 - ISO 105 B02

Efecto Gota de Agua 30 min | To water spotting after 30 min.

**Ligero abultamiento y pérdida de brillo** | Slight swelling & decrease in gloss ISO 15 700

Efecto Gota de Agua 16 h | To water spotting after 16 h

Grey Scale 4 - ISO 15 700

## Resistencia | Resistance

Abrasión Pantalón | "Pantalon" Tear

≥20 - UNI EN ISO 3377 -1

A la flexión (seco) | Flexing endurance

50.00 cycles no damage - ISO 5402

Ante fuentes de calor (Cigarette) | Burning behaviour to cigarette and match flame

Apto - UNI EN 1021-1 and UNI EN 1021-2

## Solidez color al frote | Color rub fastness

En seco 50 ciclos | Dry 50 cycles

≥3 - ISO 11640:1998

En húmedo 20 ciclos | Wet 20 cycles

≥3 - ISO 11640:1998

Al sudor 20 ciclos | Sweat 20 cycles

≥2 - ISO 11640:1998

## Limpieza y mantenimiento | Cleaning and Maintenance



**Evitar la luz solar**  
Avoid direct sun light



**Limpiar con un paño suave y seco**  
Clean with soft and dry cloth



**Evitar exposición a fuente de calor**  
Keep the leather away from direct heat